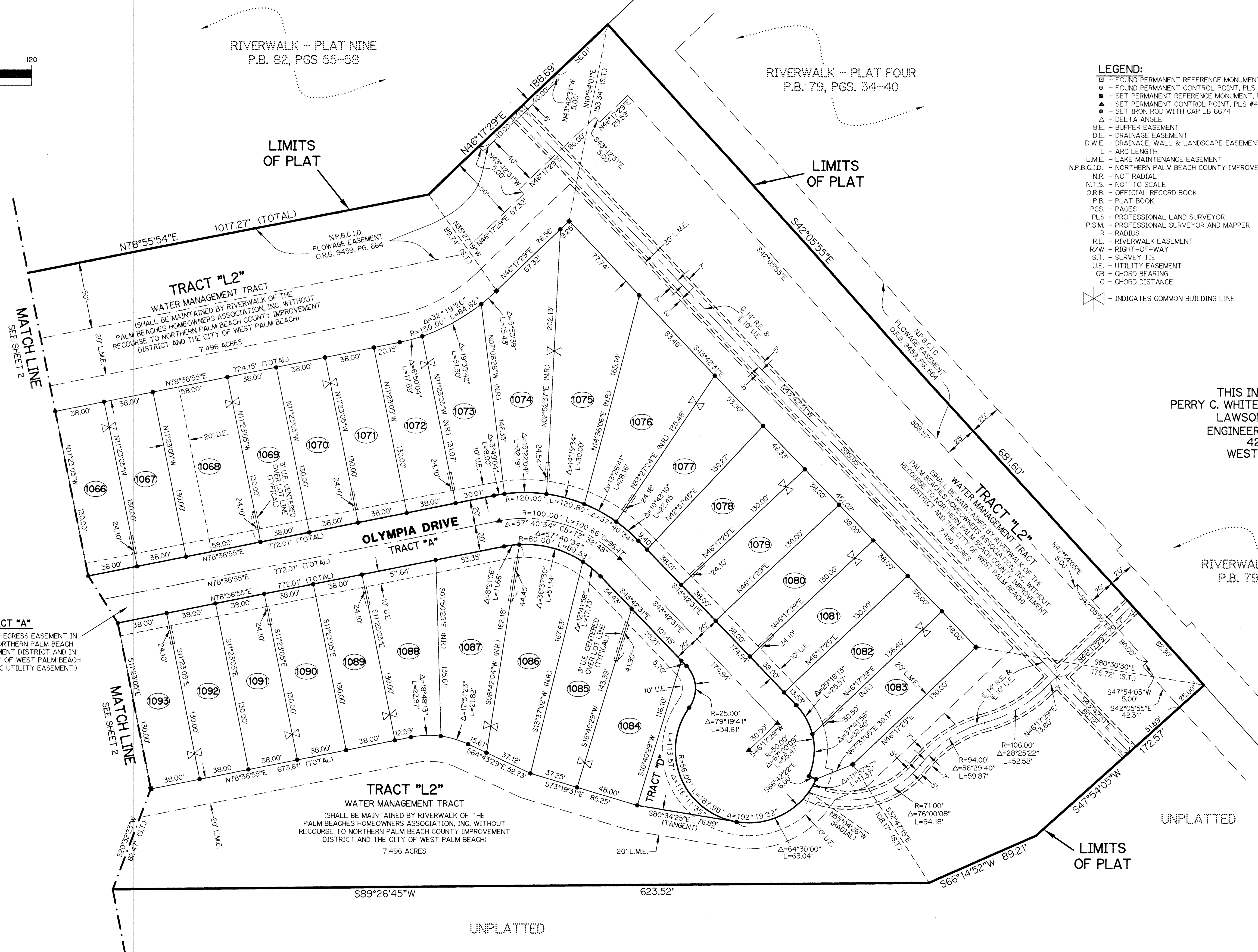
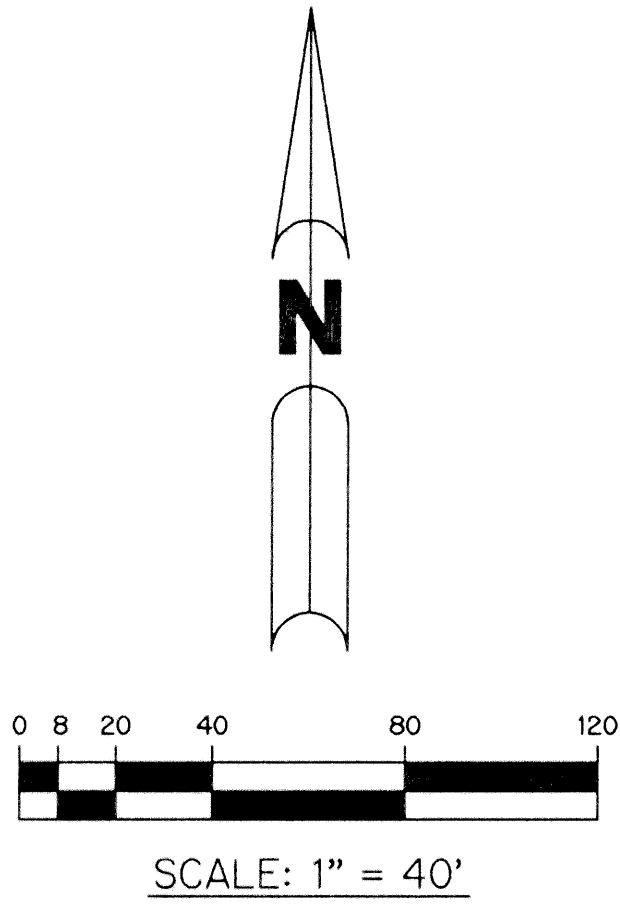


RIVERWALK - PLAT TEN

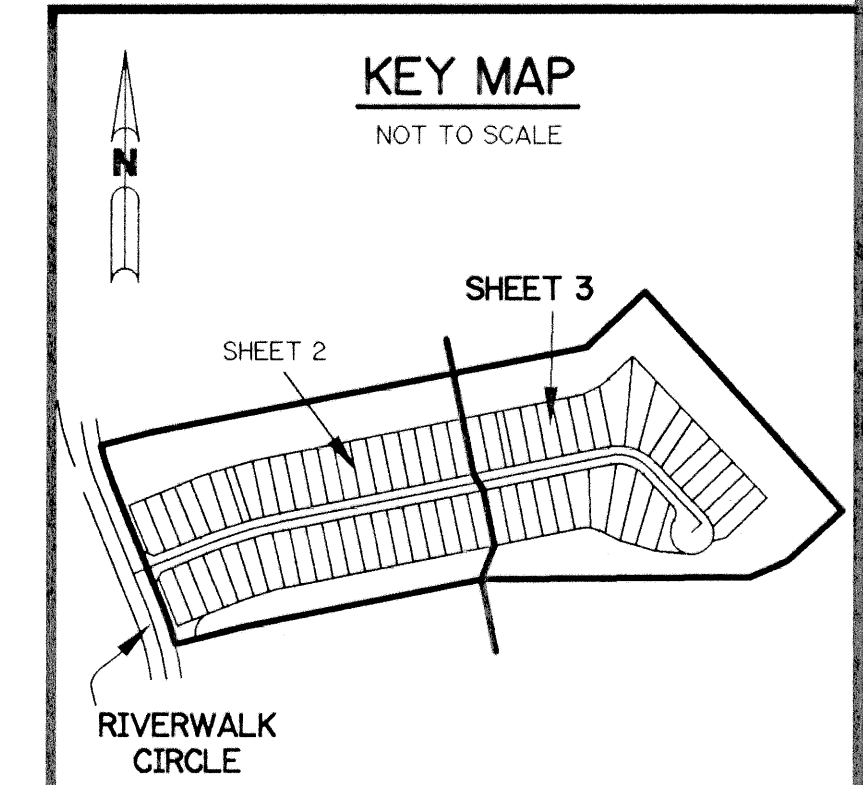
A PARCEL OF LAND LYING IN SECTION 21, TOWNSHIP 43 SOUTH, RANGE 42 EAST, CITY OF WEST PALM BEACH, PALM BEACH COUNTY, FLORIDA.

SHEET 3 OF 3 MARCH, 1998



- LEGEND:**
- - FOUND PERMANENT REFERENCE MONUMENT, PLS #4213
 - - FOUND PERMANENT CONTROL POINT, PLS #4213
 - - SET PERMANENT REFERENCE MONUMENT, PLS #4213
 - ▲ - SET PERMANENT CONTROL POINT, PLS #4213
 - - SET IRON ROD WITH CAP LB 6674
 - △ - DELTA ANGLE
 - B.E. - BUFFER EASEMENT
 - D.E. - DRAINAGE EASEMENT
 - D.W.E. - DRAINAGE, WALL & LANDSCAPE EASEMENT
 - L - ARC LENGTH
 - L.M.E. - LAKE MAINTENANCE EASEMENT
 - N.P.B.C.I.D. - NORTHERN PALM BEACH COUNTY IMPROVEMENT DISTRICT
 - N.R. - NOT RADIAL
 - N.T.S. - NOT TO SCALE
 - O.R.B. - OFFICIAL RECORD BOOK
 - P.B. - PLAT BOOK
 - PGS. - PAGES
 - PLS - PROFESSIONAL LAND SURVEYOR
 - P.S.M. - PROFESSIONAL SURVEYOR AND MAPPER
 - R - RADIUS
 - R.E. - RIVERWALK EASEMENT
 - R/W - RIGHT-OF-WAY
 - S.T. - SURVEY TIE
 - U.E. - UTILITY EASEMENT
 - CB - CHORD BEARING
 - C - CHORD DISTANCE
 - X - INDICATES COMMON BUILDING LINE

THIS INSTRUMENT PREPARED BY
 PERRY C. WHITE, P.S.M. 4213, STATE OF FLORIDA
 LAWSON, NOBLE AND WEBB, INC.
 ENGINEERS PLANNERS SURVEYORS
 420 COLUMBIA DRIVE
 WEST PALM BEACH, FLORIDA
 LB 6674



SUBDIVISION # Riverwalk #10
 BOOK 83 PAGE 87
 FLOOD ZONE - FLOOD MAP # -
 ZONING -
 ZIP CODE -
 PUB NAME City of West Palm Beach
 143 870